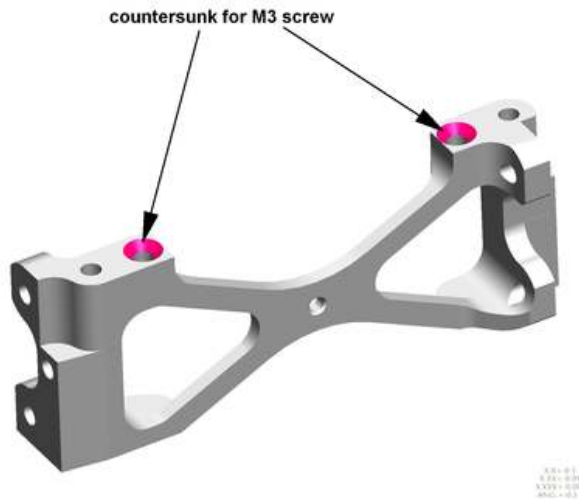


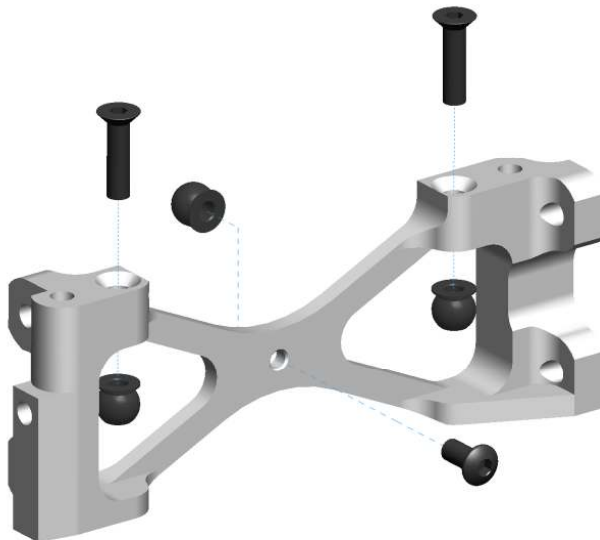
## Radioplate link system Serpent 966 / 960

In order to be able to run the 966 without the rear two screws that fix the radiotray to the bracket (better on some tracks and very good in Lostallo at the warm up), you can do the following modifications:

1. countersunk the top of the aluminium radioplate bracket:

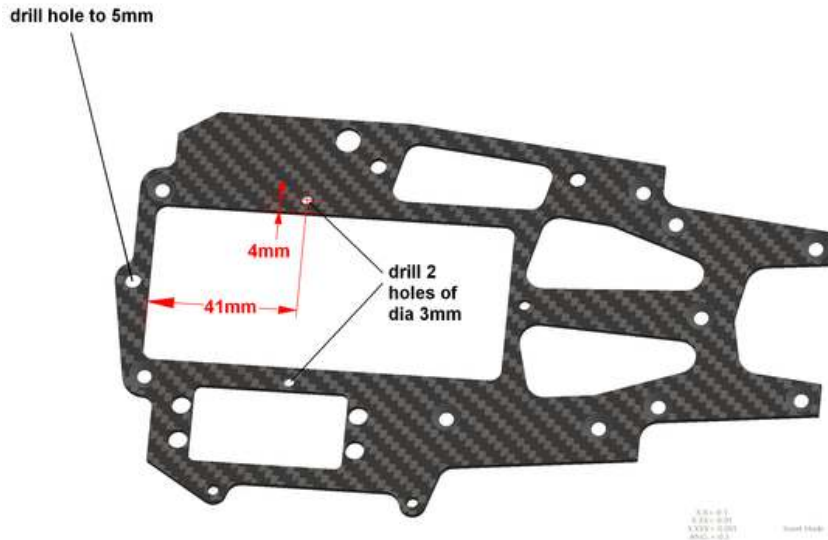


2. fix three pivotballs to the bracket:

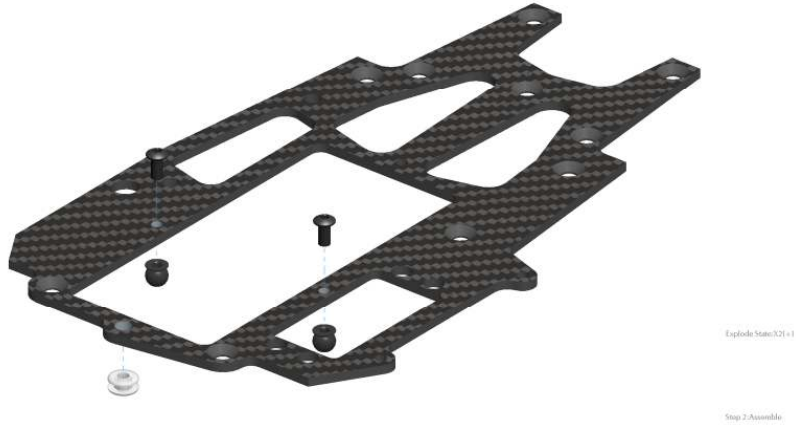


3. drill up the rear tank fixing hole in the radioplate to  $\varnothing$  5mm and drill 2 more holes on each side of the tank  $\varnothing$  3mm. Drill these holes 4mm from the side of the tank cut-out and 41mm in front of the rear edge. If you don't use a layed-down throttle servo,

these holes have to be more forward, and the dimension should be 62mm instead of 41mm



4. fix two pivotballs and a rubber grommet to the radioplate



5. Screw a long setscrew into a balljoint, put it through the rear grommet and screw a tank mounting on on top of it

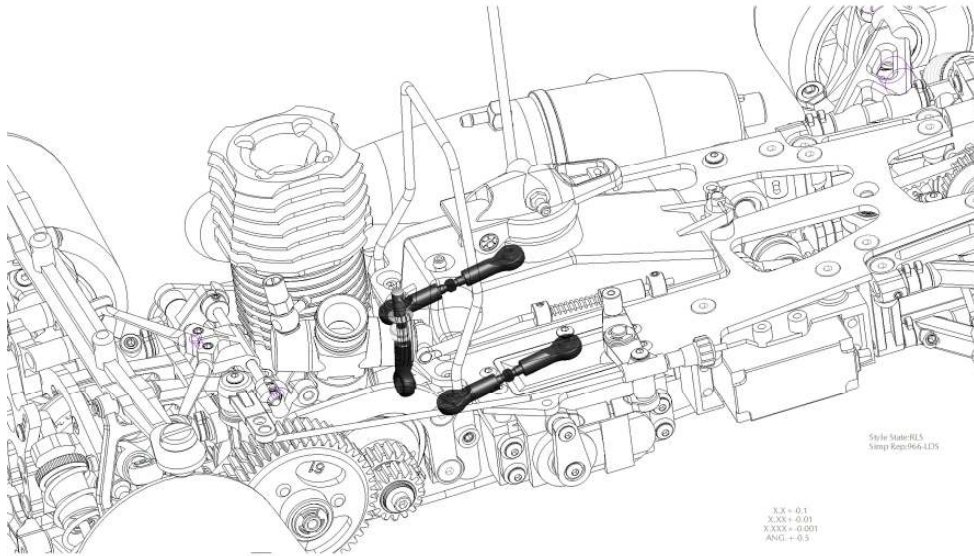


6. make 2 links as shown. The distance between the two balljoints should be 8.7mm



7. assemble everything as shown

# SERPENT



Stylizacja: RLS  
Wzrost: 964-LDS

X.X = 0.1  
X.XXX = 0.01  
X.XXXX = 0.001  
ANG. = 0.5