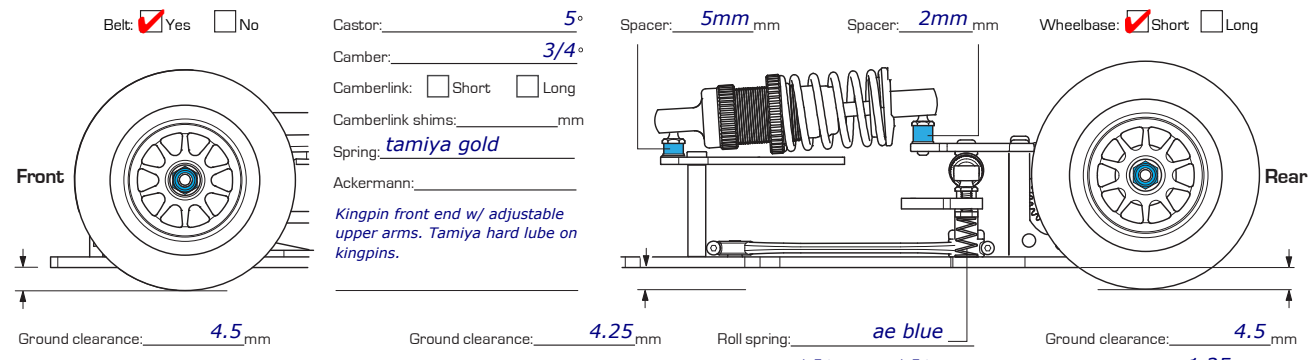
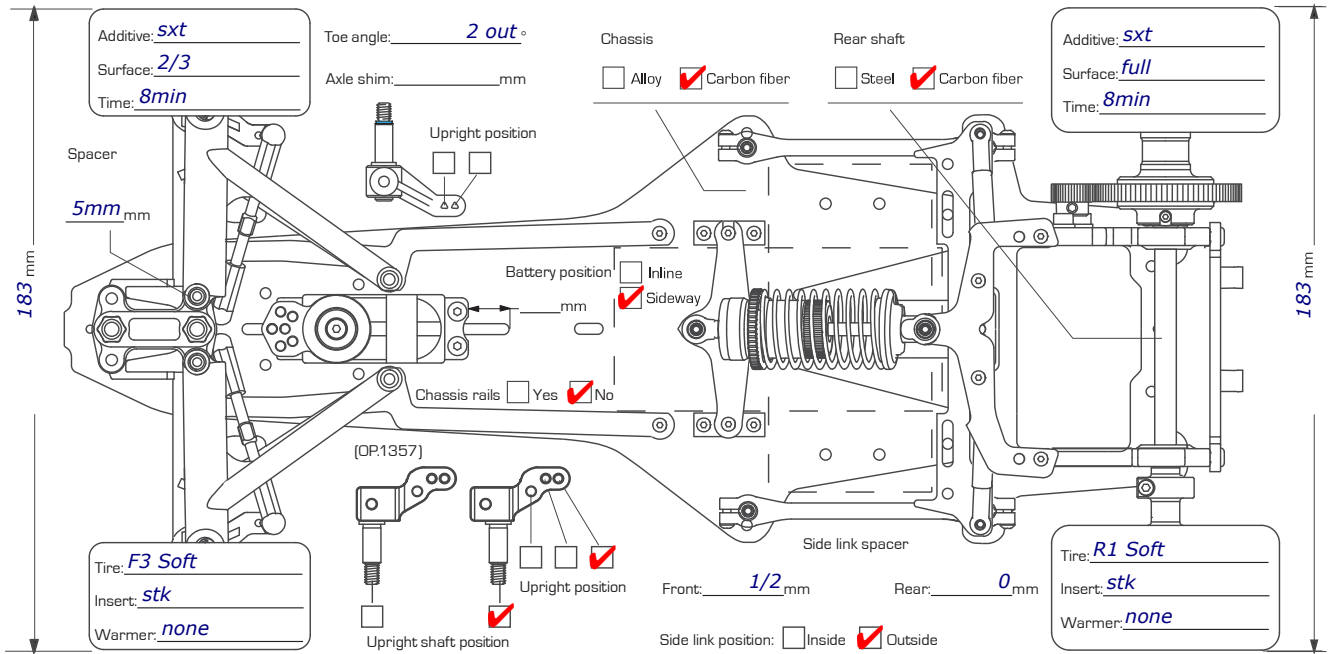
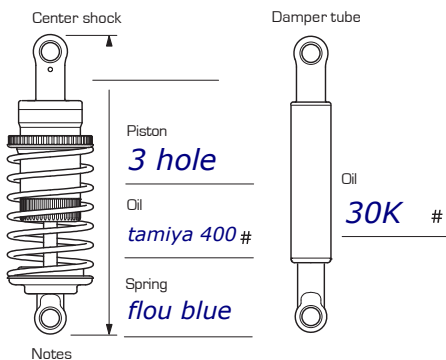
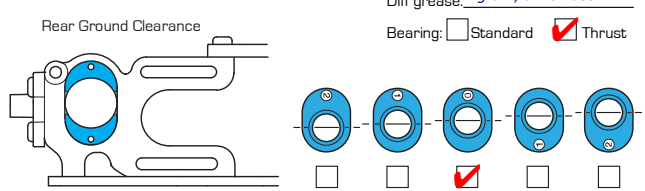
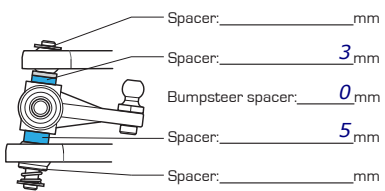


Composition Asphalt Indoor Surface Smooth Medium Bumpy Layout Tight Mixed Open Humidity
 Carpet Outdoor Traction Low Medium High Track temp. Air temp.



IFS Front
 Droop: _____ mm
 Damper oil: _____ cst
 Spring: Silver (Hard) Dark Grey (Medium) Blue (Soft) Yellow (Extra Soft)
 Shock tower hole: Bottom Middle Top



Motor: motiv
 Timing: 48deg
 Spur/Pinion: 93
 ESC: tekin rs2 spec
 ESC Setting: push control 25
throttle minimum 12, linear curve.
 Battery: hobbyking 4600 shorty.
 Body: pf-15
 Front wing: f60
 Front wing setting: _____
 Rear wing: f60
 Rear wing height: stk
 Rear wing setting: stk

Notes
Kingpin f104 front end with adjustable upper arms. mini servo mounted in plastic f104 mount at a 12deg tilt with an xray servo saver and ballstuds forward in lower holes. tamiya gold front spings.
Sidewalls glued on front tires.