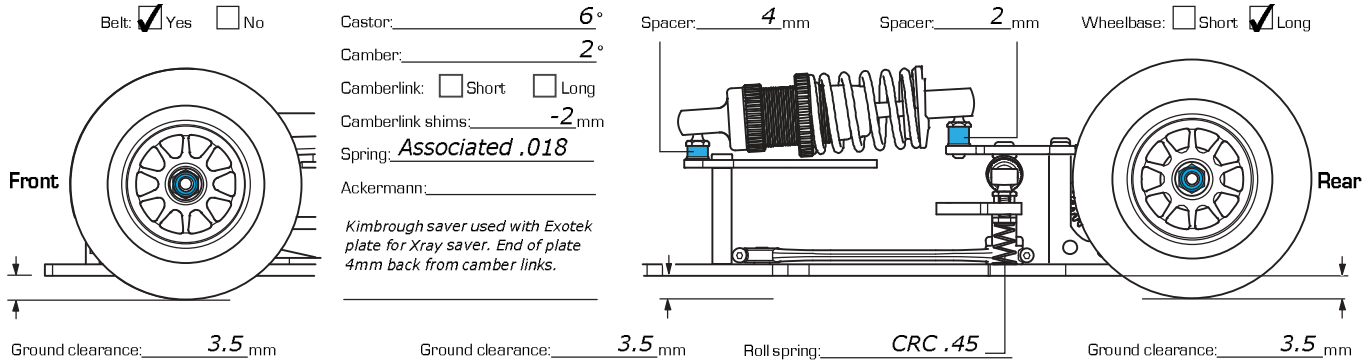
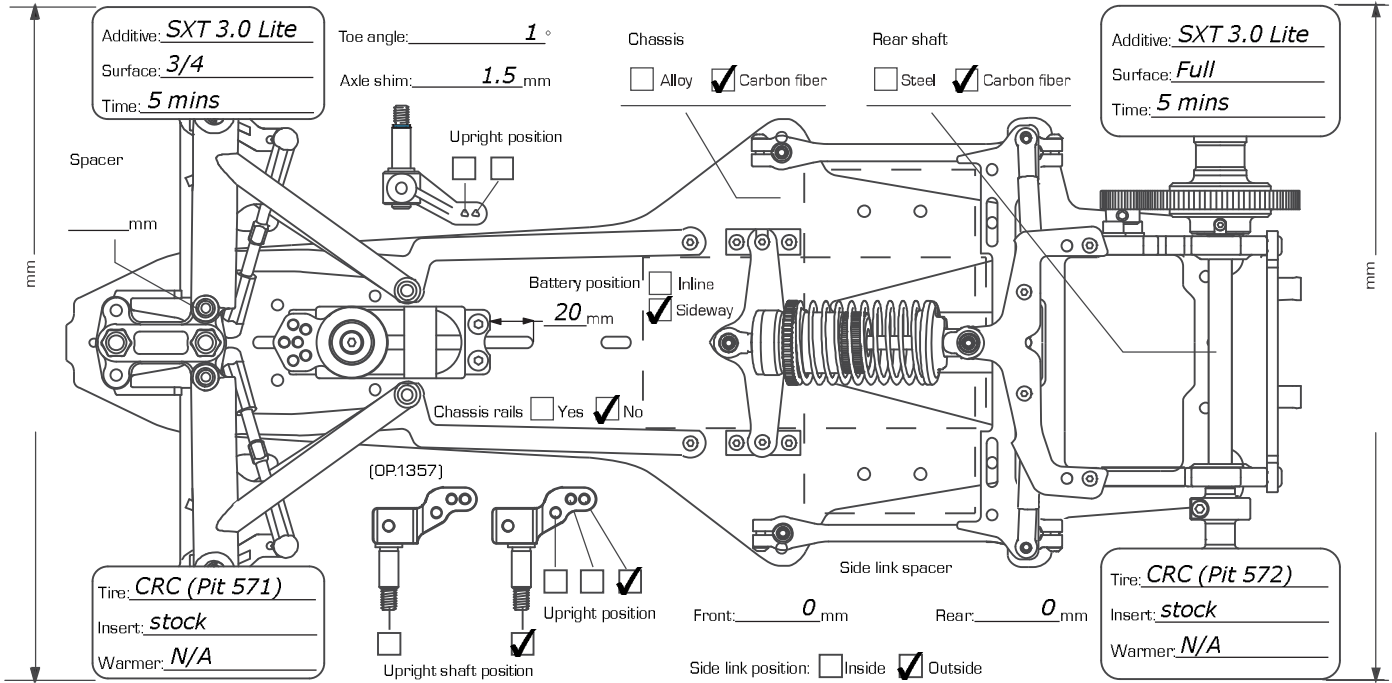


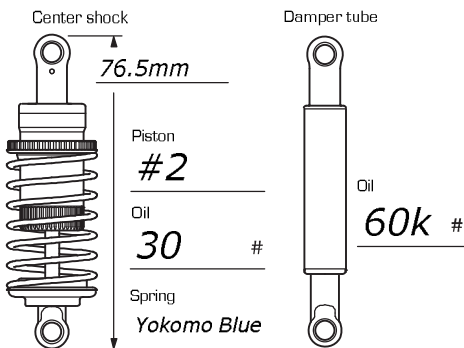
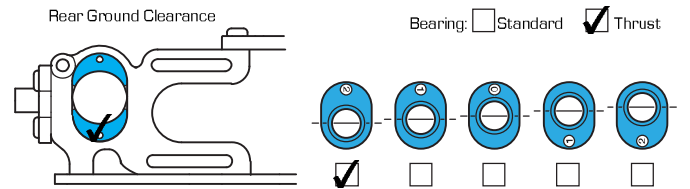
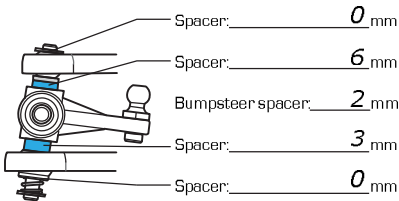
Event Snowbirds Nationals

Composition Asphalt Indoor Surface Smooth Medium Bumpy Layout Tight Mixed Open Humidity
 Carpet Outdoor Traction Low Medium High Track temp. Air temp.



IFS Front

Droop: _____ mm
 Damper oil: _____ cst
 Spring: Hard Soft
 Shock tower hole: Bottom Middle Top



Notes
 Stock battery strap was removed and replaced with 25mm standoffs and the battery strap from the F1R3.

Motor: Trinity D4 25.5
 Timing: 40 degrees
 Spur/Pinion: 37/96
 ESC: Hobbywing Justock
 ESC Setting: _____
 Battery: Trinity White Carbon Shorty
 Body: Protoform 2015
 Front wing: Montech
 Front wing setting: _____
 Rear wing: Serpent SF2 Narrow
 Rear wing height: low!
 Rear wing setting: low downforce

Notes
 Exotek carbon front arm mount was used, but ball studs were lowered 2mm to add reactive caster. Rear cross brace was lowered by 4mm to fit Protoform '15 body. Side springs were moved to inner holes and preload was set so the springs just touched the chassis. Battery was moved forward 14mm and secured with tape. Sidewalls were glued on both front and rear tires. Diff was set as tight as possible. Rear wing mounted directly to rear brace with no standoffs.